

CONSORTIUM MEMBERS



Bitsens



CONTACT



WWW.CAPABLE-PROJECT.EU

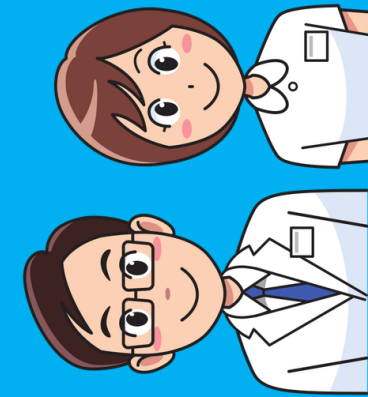


IF YOU ARE INTERESTED AND WANT TO LEARN MORE ABOUT THIS PROJECT, PLEASE CONTACT US.

EMAIL: INFO@CAPABLE-PROJECT.EU



THIS PROJECT HAS RECEIVED FUNDING FROM THE EUROPEAN UNION'S HORIZON 2020 RESEARCH AND INNOVATION PROGRAMME UNDER GRANT AGREEMENT NO 875052.



CAPABLE
Cancer Patients Better Life Experience



TARGET

The objective of the CAPABLE project is to create a technological tool capable of detecting in great detail the changes in the psycho-physical state of health of the patient.

For this purpose, the data collected on a day-to-day basis will provide accurate information to the doctor between one follow-up visit and the next.



The doctor will therefore be able to detect early warning signs or symptoms that may make it necessary to adapt the treatment interventions.

In addition, the patient and their caregiver will learn how to better manage some aspects of the disease, in particular the side effects due to cancer treatment.



STRATEGY

To make this type of monitoring possible, CAPABLE will use a smartwatch and a smartphone app.

The information collected will be processed by artificial intelligence algorithms to provide personalized suggestions in a convenient and accessible way.

The app will also allow you to receive medication alerts and reminders for hospital appointments, thus facilitating adherence to treatments.



BENEFITS

CAPABLE strongly believes in teamwork to face the problems of cancer patients. For this reason, it also pays particular attention to non-pharmacological aspects, promoting interventions for mental well-being, for adequate nutrition and for the maintenance of an active life.

CAPABLE can contribute to the personal growth of the patient by providing information from secure sources, accessible through the app.